

Please read this manual carefully before connecting and operating your COOL-AIR Evaporative Cooler.

Please read the "IMPORTANT SAFETY INSTRUCTIONS" at the beginning of this manual.

IMPORTANT SAFETY INSTRUCTIONS



Caution

In order to reduce the possibility of fires, electric shock or personal injury, please read and save these instructions prior to assembly or operation.

- Use only with a 120V, 60Hz. Grounded outlet.
- Contact an electrician if you are unsure about your electrical connection.
- Do not use the unit on unstable or uneven surfaces.
- Before operation, place the unit on level surface.
- Switch OFF and unplug unit before any maintenance, servicing, or cleaning, or repositioning.
- Do not operate unit with the Cooler Pad or other Grills removed.
- Do not use close to heat sources such as stoves or radiators.
- Do not use the unit close to sources of water, such as swimming pools hot tubs, bath tubs, sinks, etc.
- Do not operate the unit with a damaged cord, plug or other component.
- Do not run the power cord under carpet or other floor covering.
- Do not use the power cord with an adaptor plug that converts the three prong plug into a two prong connector. Do not use an extension cord.
- Do not use the appliance with an improperly grounded receptacle.
- Do not overfill. Use water only in Water Tanks.
- Do not alter or modify this product.
- Do not allow children to play near, operate, or service this product.
- Do not carry the unit when it is full of water.
- Do not insert foreign objects into the fan.

READ AND SAVE THESE INSTRUCTIONS



W A R N I N G

TO PREVENT FIRE OR SHOCK HAZARD, DO NOT USE THIS PRODUCT WITH ANY SOLID-STATE SPEED CONTROL DEVICE, RECEPTACLE OR OTHER OUTLET UNLESS THE PLUG BLADES CAN BE FULLY INSERTED TO PREVENT BLADE EXPOSURE. TO PREVENT FIRE OR SHOCK HAZARD, DO NOT EXPOSE THIS APPLIANCE TO RAIN OR EXTERNAL MOISTURE.

CAUTION: TO REDUCE THE RISK OF ELECTRIC SHOCK, DO NOT DISASSEMBLE PRODUCT. NO USER SERVICEABLE PARTS INSIDE. REFER SERVICING TO QUALIFIED SERVICE PERSONNEL.

Introduction

Congratulations on your purchase of this Ritetemp quality product. The COOL-AIR 5051 Evaporative Cooler is a proven, reliable, powerful and safe product, which will enable you to, economically, lower the temperature in any average-sized room in your house, office, restaurant, warehouse, or garage. It works best in warm climates with low humidity.

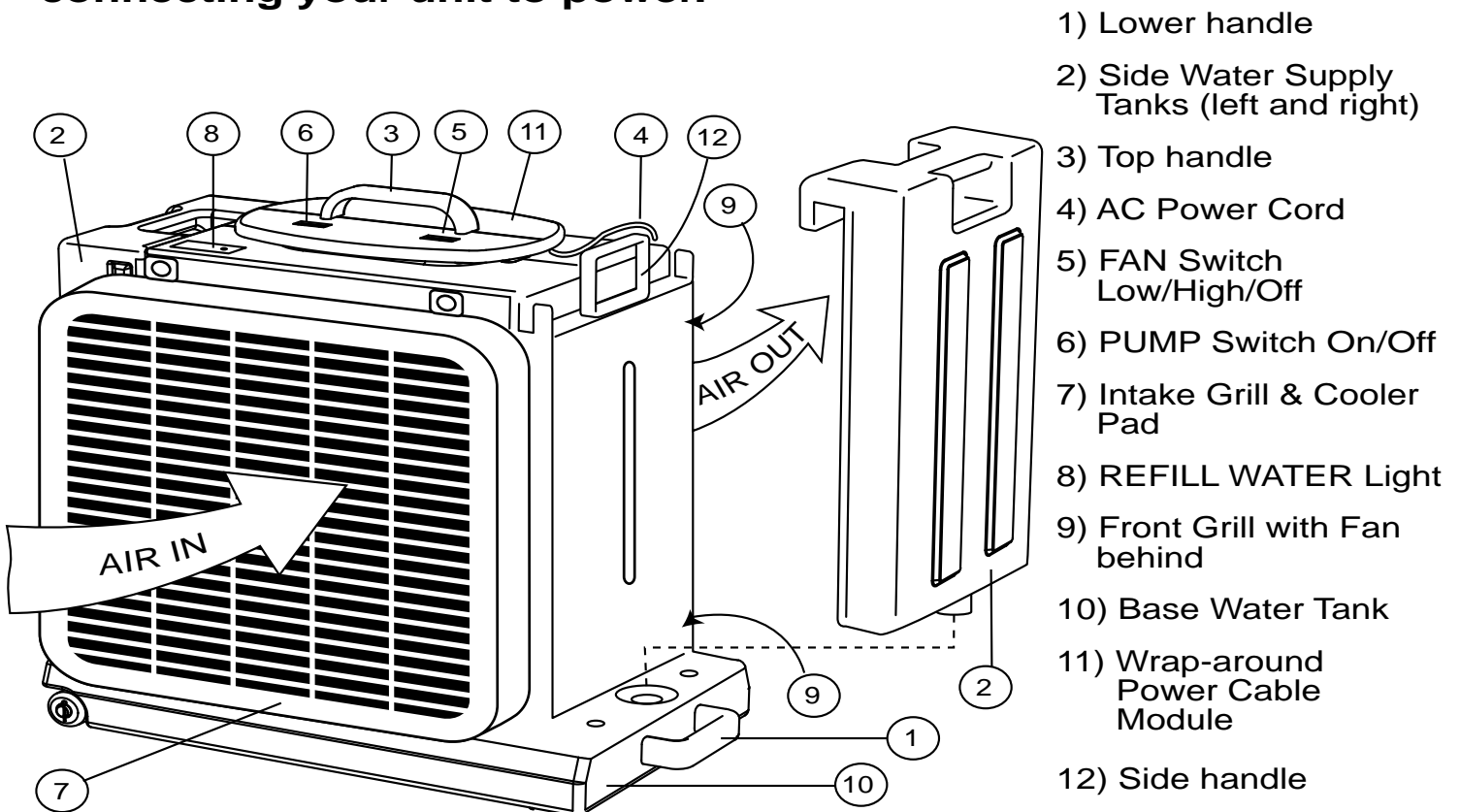
The COOL-AIR 5051 has 3 key benefits.

COOLS - It is NOT an air-conditioner and operates on the simple principle of warm air being drawn through and cooled by water evaporating. It does not use ozone-damaging refrigerants.

HUMIDIFIES - The COOL-AIR 5051 also humidifies the air as it cools.

FILTERS - As air is drawn through the Cooler Pad, dust particles are filtered out of the air.

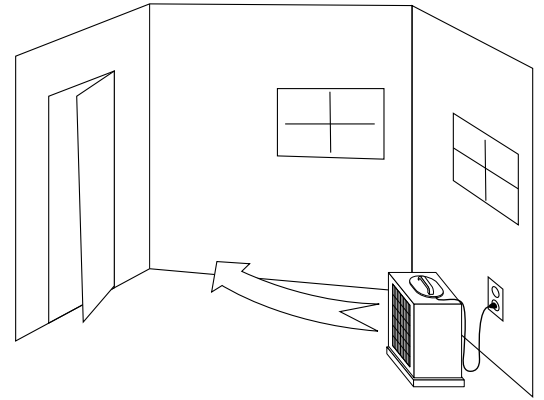
Please read the following instructions carefully before connecting your unit to power.



1 Location

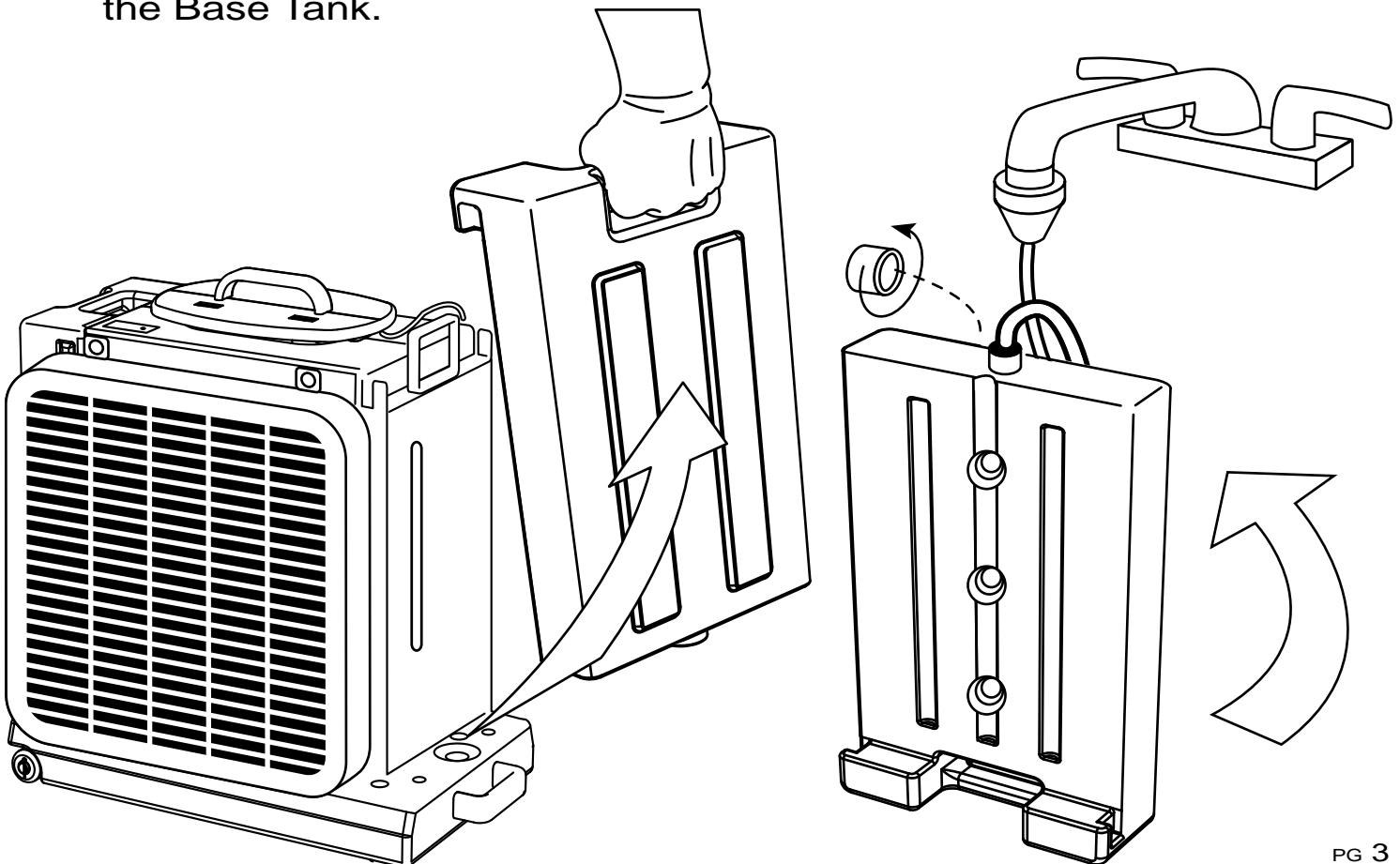
- Place the COOL-AIR 5051 on floor.
- Ensure that the Fan and Water Pump Switches are OFF.
- Face the fan toward where you want the cool air to blow.

To assist the room receiving a current of cool air throughout, open a door in the wall opposite the unit. The cooled air will, eventually, pass out through this opening, thereby keeping a comfortable level of humidity in the room or space. Do NOT connect the electricity supply yet. Make sure the Fan Switch is OFF.



2 Fill with Water

- Lift the two SideTanks from the Cooler.
- Open the Valve Caps and fill with clean water. DO not overfill.
- After filling, close the Valve Caps. Take care that they are screwed all the way on, and have a snug seal on the Cap. When filling the Side Tanks indoors use the Fill Hose provided.
- Replace the SideTanks on the Cooler. Take care that the Valve Cap inserts fully into the receptacle in the Base Tank. Water will flow into the Base Tank.



3 Plug in Unit

- Connect the power plug to your 120V, 60HZ grounded wall socket.

4 Operation

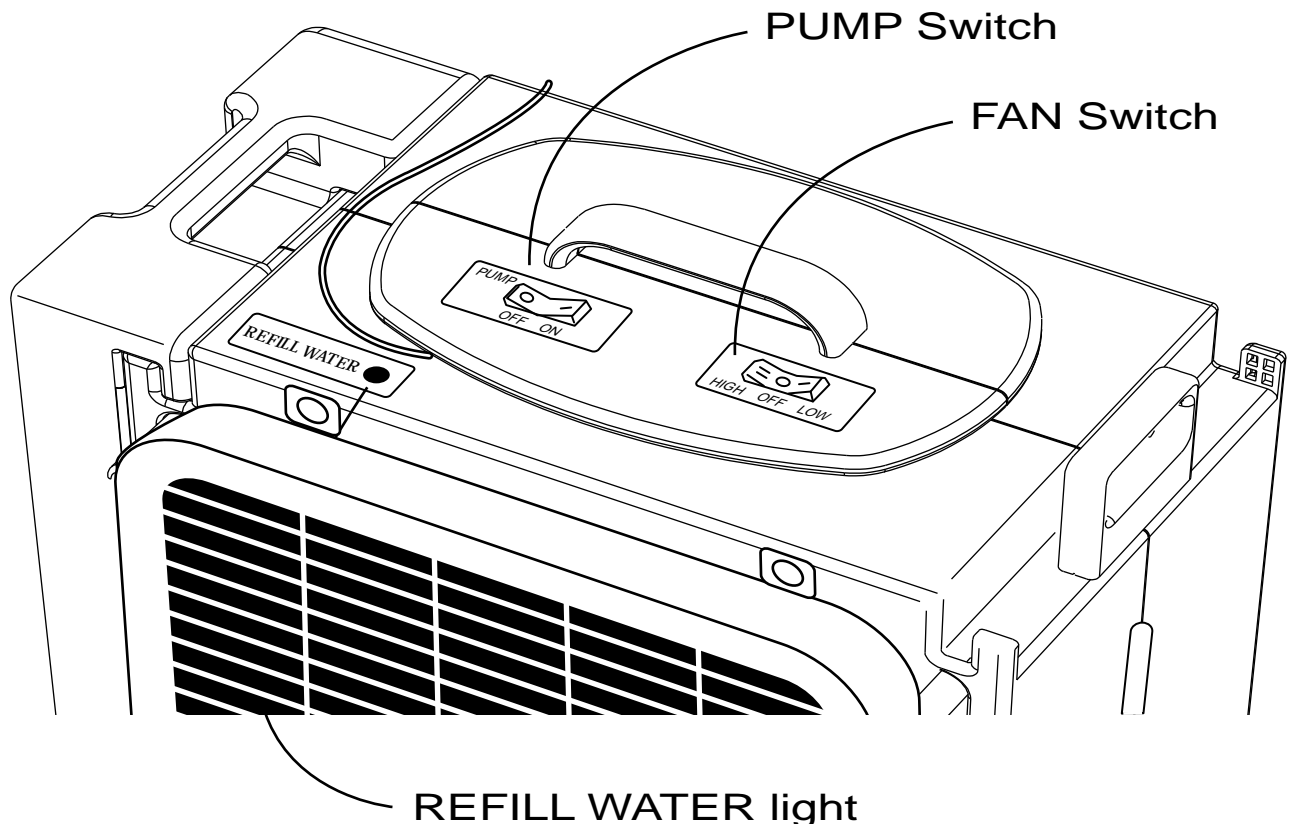
- Turn Fan Switch to 'LOW'. For best cooling results, the Fan should be run on LOW speed. For air circulation with moderate cooling use HIGH fan speed.
- Turn Pump Switch to 'ON'. Water will start feeding to the Cooler Pad. It will take several minutes for the Cooler Pad to become completely wet.

Note: You can use the Cooler as a fan only, by switching the Water Pump switch to OFF and the Fan Switch to HIGH.

5 Refilling with Water

When your Cooler runs low on water the REFILL WATER Light will come on.

- Turn OFF Fan and Water Pump. Disconnect Power Cable from wall socket.
- Remove the Side Tanks and fill with water.
- Replace the Side Tanks.



8 End of Season Care

Important: Before doing any maintenance, turn OFF the Fan and Water Pump switches, unplug the product from the 120V AC outlet.

Cooler Pad

- The Cooler Pad should be replaced annually or more frequently, if it becomes dirty and clogged. (See: 'How to change Cooler Pad')
After cleaning the pad, reinstall in reverse order.

Side Water Tanks

- Remove as normally, open Valve Caps and empty remaining water. Allow to dry out completely before closing and returning to unit.

Base Water Tank

- After storing the power cord on the reel, and while Side Tanks are drying, wheel the unit to an outdoor location or somewhere with water drainage. Using the Base Handle at the end of the Base Water Tank, gently tip the unit on to its side and allow the remaining water to drain out of the Base Tank. Allow the Base Tank to dry out before returning the Side Tanks to the unit.

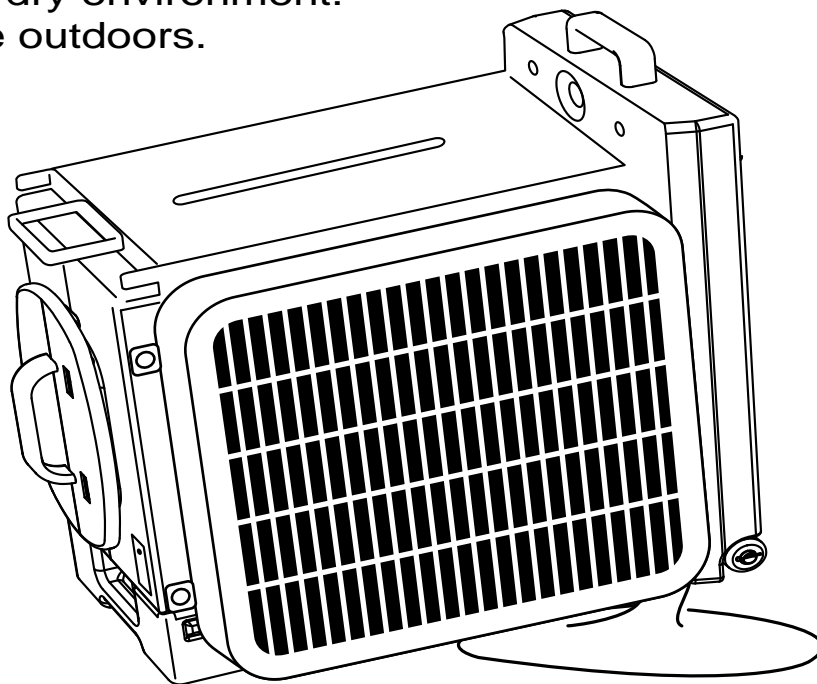
Fan Motor and Water Pump do not require maintenance.

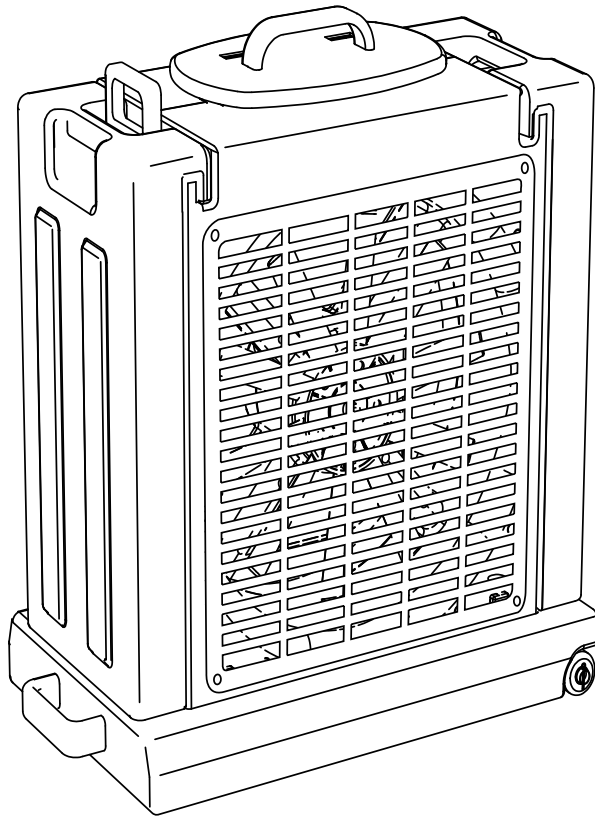
Overall Unit

- Wipe the casing, fan and grills with a damp cloth.

Storage

- When not in use, store your Cool-Air 5051 indoors in a dry environment.
Do not store outdoors.





Specifications COOL-AIR 50

Power Source:	AC120V 60HZ
Total Power Consumption:	130W
Maximum Water Capacity:	7 gallons
Net Weight of Unit (Empty):	24.24 lbs (11 kg)
Outside Dimensions:	24 in. H x 21 in. W x 13.3 in. D 61cm. H x 59.3 cm. W x 33.8 cm. D

Customer Support: 888-515-2585 or:
visit our website www.ritetemp-thermostats.com
Printed in China